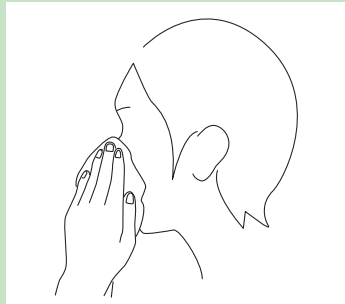


How to use BECLOMETASONE NASAL POWDER 25 μ g “TOWA”

Please follow the instructions below for proper use of the medicine:

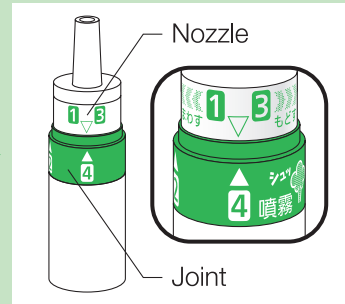
Please also make sure to read the precautions on the reverse side before use.

1 Blow your nose.



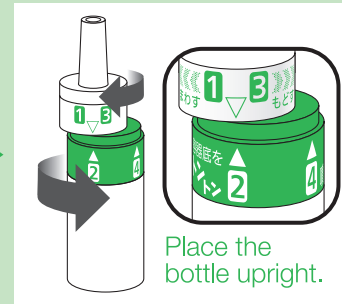
Blow your nose to clear your nasal passages before using the medicine.

2 Confirm.



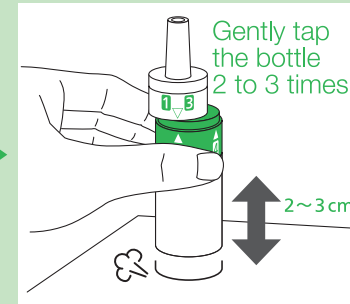
Remove the cap and confirm that the ∇ mark on the nozzle aligns with the \triangle (4) mark on the joint as shown above.

3 <<< Turn the nozzle. 1



Turn the nozzle in the direction of the (1) mark so that the ∇ mark aligns with the \triangle (2) mark.

4 Gently tap the bottle. 2



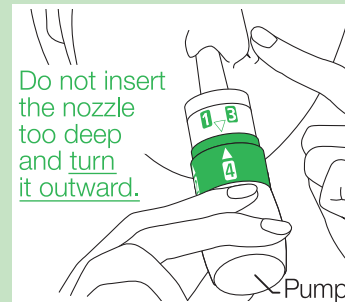
Gently tap the bottle on a flat surface 2 to 3 times from a height of 2 to 3 cm.

5 >>> Turn the nozzle. 3



Turn the nozzle in the direction of the (3) mark so that the ∇ mark aligns with the \triangle (4) mark.

6 4 Spray.



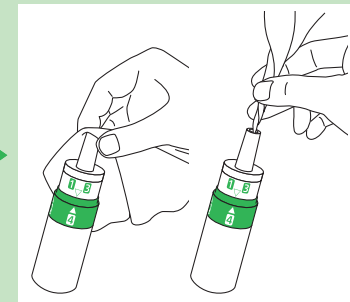
Insert the nozzle into a nostril while closing the other nostril with a finger, and firmly push the pump 2 to 3 times.

7 4 Spray into the other nostril.



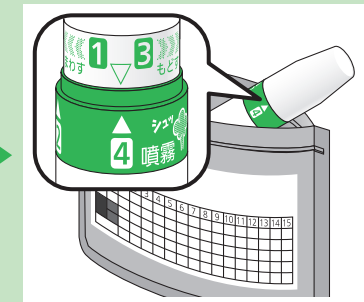
After repeating Steps 2 to 5, insert the nozzle into the other nostril and spray as explained in Step 6.

8 Perform maintenance.



Wipe off the dirt outside and inside the nozzle with a cotton swab or a tissue paper after spraying.

9 Store.



Turn the nozzle and the bottle body to align the ∇ and \triangle (4) marks and replace the cap. Fill in the Spray Frequency Checklist and store the bottle in a storage bag.

! If you lose track of how to use

Repeat from Step 2.

The spray amount will not increase with repeated procedures.

● The dosage prescribed for you is
(_____) spray(s) per day
for each nostril.

● Spray in the
MORNING / at **NIGHT** / (_____)

● Start date MM/DD/YYYY
_____/_____/_____/_____

About this medicine

- This medicine is used to alleviate the symptoms of sneezing, runny nose, and stuffy nose.
- Please follow your doctor's instructions for dosage and administration (number of sprays).
- This medicine is intended for use by spraying directly into the nose. Do not spray into your eyes or mouth.
- This bottle is for 60 sprays.(If you spray into each nostril twice a day, you will spray 60 times in 15 days.)
- Owing to the small amount of medicine in each spray, you may not feel like you have taken the medicine. However, if sprayed correctly, the medicine has been administered as prescribed.
- Do not disassemble the bottle or wash it with water. You will not be able to spray correctly.

Please see the reverse side for instructions on how to use.

About the storage bag and Spray Frequency Checklist

- Enter the start date on the storage bag.
- In order to confirm the number of sprays, check the box after every use.
- After opening the aluminum package, put the bottle in the storage bag and store it at room temperature away from moisture.
- Do not use the bottle if the aluminum package was opened a long time ago.

開封口 開封後はチェックを閉じて保存してください。

ベクロメタゾン鼻用パウダー25 μ g「トワ」

使用開始日 _____ 月 _____ 日 噴霧回数記入欄

噴霧するごとに、記入欄を一つずつチェックしてください。

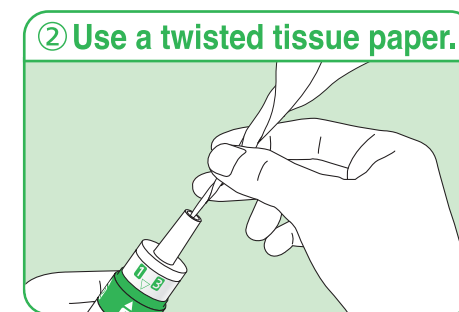
回数	1	2	3	4	5	6	7	8	9	10	11	12	13	14	15
朝															
右															
左															
夜															
合計回数	4回	8回	12回	16回	20回	24回	28回	32回	36回	40回	44回	48回	52回	56回	60回

本剤は水気や湿気にさらすと、空気が少なくなりましたら、新しいお薬を処方していただいでください。

About maintenance of the bottle

If you leave the dirt on the nozzle, you may not be able to spray any more. Clean up the nozzle by following these steps:

- Wipe the nozzle tip with a tissue paper after spraying.
- If nasal mucus enters inside the nozzle, wipe it off with a clean cotton swab (Figure ①) or a twisted tissue paper (Figure ②) after spraying.



The bottle is made of plastic. After running out of the medicine, dispose as plastic waste according to the methods specified by each local government.